

Pennsylvania Cutting Horse Association

April 2021



Photo from May 2016

IN THIS ISSUE

Cutting Trainers

Tips for Getting Started in Cutting without Breaking the Bank

What Cow Did You Want Me to Cut? and Cow Face Markings

2021 PCHA Show Schedule UPDATED

Wild Assateague Ponies - 2020 yearlings



PRESIDENT

ANDY SUTLIFF
484-955-1881
sut459@aol.com

VICE PRESIDENT

JACK WERNER
267-246-6511
jcw@dejazzd.com

SECRETARY

JOANNE COTE THAYER
215-527-1826
Joanne.Thayer@gmail.com

TREASURER

BILL STEIN
570-428-2765
hws711@gmail.com

DIRECTOR AT LARGE

DAVE PHILLIPS
610-926-4810

BOARD MEMBERS

VOTED IN FOR NEW 2 YEAR TERM

SANDRA BROWN
610-745-6006

AMARA HITTINGER
610-984-3609

MICHELLE STERNER McNUTT
570-617-5786

ALISE MELVIN
267-664-9992

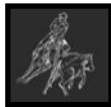
1 YEAR REMAINING IN TERM

JOE COSTA
215-679-2470

KARLENE SCHLEGEL
610-703-1693

SHELLY CASCIATO
610-827-9342

LYNDRA BILLS
215-206-4850



A WORD FROM OUR SECRETARY

We're looking forward to the warmer weather, more time to ride, and getting to see each other again!

Another joy of springtime - Healthy & Happy Foaling to those of you with pregnant mares! If you send us some pictures, we'll do a baby page in an upcoming issue.

Our banquet and first show of 2021 are upon us! We will have a cattle practice at 3pm on Friday, followed by our annual awards dinner at 6pm in the arena. The show will start at 8:00 am both Saturday and Sunday!

Help support and congratulate our division winners by ATTENDING THE 2020 AWARDS BANQUET.. Everyone is invited but you need a reservation for dinner. . The cost of \$25 per person can be paid at the banquet or added to your weekend bill.

If you have not yet made stall reservations, called for Friday night work session, or made reservation for awards banquet - please call Jack Werner or Karlene Schlegel ASAP.

*Looking forward to seeing everyone again,
Joanne Thayer*

*The Secret of Change
Is to Focus all of your energy
Not on fighting the Old
But on Building the New*

-Socrates



Rt. 130 South along the Delaware River and Raccoon Creek in Logan Township, New Jersey.

Keystone
HORSE CENTER, LLC

ARENA & STALL RENTALS
HORSE SHOWS • TRAINING • LESSONS
1-877-KEY-HORS
www.keystonehorsecenter.com



Cutting Horse Central

EVERYTHING IN ONE PLACE
FOR CUTTERS.
PROMOTE • BUY • SELL



www.cuttinghorsecentral.com

2021 Show Schedule

April 24th & 25th, 2021 -

Roy Bauer, Elkins, WV

May 1st - 2nd, 2021 - PCHA Show & Banquet

Keystone Horse Center, Bloomsburg, PA

May 22nd & 23rd, 2021 -

JMJ Farm, Lewisburg, WV

June 12th - 13th, 2021 - PCHA

Keystone Horse Center, Bloomsburg, PA

June 26th - 27th, 2021 - PCHA/ECCHA

Meadow Event Park, Doswell, VA - PCHA/ECCHA

July 10th & 11th, 2021 -

Roy Bauer, Elkins, WV

July 17th - 18th, 2021 - PCHA

Dream Park, Logan Township, New Jersey

Sept 11th - 12th, 2021 - PCHA

Keystone Horse Center, Bloomsburg, PA

Sept 25th & 26th, 2021 -

Roy Bauer, Elkins, WV

Oct 2021 date TBD -

JMJ Farm, Lewisburg, WV

Oct 22nd - 24th, 2021 - PCHA/NCHA

Dream Park, Logan Township, New Jersey

Oct 22 & 24 PCHA/NCHA

Oct 23 NCHA Appalachian Circuit finals

Register for PCHA shows online: pchacutting.com/showinfo
On-site registration is also available



MOVING FORWARD

Have you ever said, "Well, moving forward, let's _____."

You let go of anything that holds you back. You look to what you want to create next. You focus on progress, a move in a positive direction. Road-blocks are released and all is right in your world once again.

Don't you love that feeling?

BarbSchulte.com

BARB SCHULTE & SANDY COLLIER

ONLINE EDUCATION AVAILABLE

Take the opportunity this winter to see videos and read blogs

BarbSchulte.com SandyCollier.com BeUnstoppable.us

IN PERSON 2021 BE UNSTOPPABLE EVENT

Apr 22 - 25, 2021 - Red Cliffs Lodge, Canyonlands of Moab, Utah

ALL WOMEN'S RIDING AND REJUVENATION RETREAT

This event puts fun, gorgeous scenery, trail riding, horsemanship and cow work instruction on steroids.

Horses are provided for you~
come trail ride, work cattle & enjoy!

Cutting Horse TRAINERS

One of the most important aspects of learning a new horse discipline is good training. These trainers will help get you off to a good start and/or keep you going & growing.



Sutliff Performance Horses is a professional training venue with an atmosphere of camaraderie. Offers training, showing, lessons, sales, and farrier services.

Andy Sutliff

Hamburg Pennsylvania on Facebook sut459@aol.com 484.955.1881



Diamond C Farm Paul and Cindy Wasyln offer a wide variety of services - from training and showing your cutting horse to lay-ups for your injured horse; from stall or field board to standing your breeding stallion.

Rixeyville Virginia diamondcfarm.com & on Facebook diamondcharm@hughes.net 540.219.1502



Kent Stough Cutting Horses

Frederick Maryland 240.277.6404



Duncan Cutting Horses

Grady Duncan

540.247.7744



Bauer Cutting Horses

Bauer Cutting Horses is a horse training facility that specializes in the development and training of cutting horses. Other services offered include, but are not limited to: beginner, youth, amateur and non-pro instruction (general riding and cutting), sales, and stallion promotion.

Roy & Rhonda Bauer

North Central West Virginia bauercuttinghorses.com & on Facebook 304.841.2700



Jim McDonough Cutting Horses

Training and Showing. NCHA Professional Trainer on site cattle & lessons.

Jim McDonough

Orange Virginia on Facebook 540.522.6821



Nave Cutting Horses

At Nave Cowhorses, we're committed to encouraging clients to learn and grow continuously. Our philosophy reflects this commitment to being a student of our sport, not just a participant. Browse our website to learn more, and get in touch if you have any questions.

Andrew Nave

Everett Pennsylvania Navecowhorses.com & on Facebook 814.327.1264



JC Cutting Horses

Come visit us at the farm and learn about No Stress Horsemanship TM. This system allows horse and rider to reach their full potential. Visit our website to learn more.

John Costa

Boyetown Pennsylvania www.jccuttinghorse.com & on Facebook jccutters2@aol.com 484.467.3789

We've decided to review this year some of our favorite Cutting/Training articles from previous editions of the newsletter. Going along with that, we'll sometimes use the cover & other photos from the old edition, too!
This article is from the April 2016 edition.



Tips for getting started in Cutting

- without breaking the bank

(source: Al Dunning articles in Horse&Rider, 2007 and 2009)

...cutting is an expensive sport...The good news: there are ways to participate on a smaller budget. Many local clubs and NCHA affiliates offer shows for novice riders at a more affordable cost. Some provide facilities and practice sessions for riders who don't own cows....

- ♦ Watch cutting videos, both world-show competitors and novice events. This will help keep you from getting overwhelmed and discouraged.
- ♦ Find a local cutting group. The NCHA website can help. (so can PCHA!)
- ♦ Watch instructional videos, read books on cutting techniques - and brush up your riding skills
- ♦ Most importantly, find a good trainer. NCHA (and PCHA) can help with this, too. Attend a few of their lessons to check out the teaching style before hiring a trainer.
- ♦ Get your trainer to help you pick the right horse, as well as what type of tack you'll need.
- ♦ "Fresh" cows - those not previously exposed to horses, are best. They're not complacent!



on



IRISH  CREEK

William E Riddle, Jr VMD Ph. D.
General & Orthopedic Equine Surgery
Diagnostic Ultrasound
Video Endoscopy
Thermography
Digital Radiography
Shock Wave Therapy
Hyperbaric Oxygen Therapy
410-658-4356
www.vet.utk.edu/vhms/centers

We've decided to review this year some of our favorite Cutting/Training articles from previous editions of the newsletter. Going along with that, we'll sometimes use the cover & other photos from the old edition, too!
This article is from the May 016 edition.

Which Cow Did You Want Me to Cut?

Bull Male, uncastrated.

Cow A female bovine.

Calf Baby cow, usually born in the early spring.

Heifer young female cow.

Steer Castrated male.

Shelly Cow An old cow, usually in poor condition.

Dogie Pronounced "Doe-ggy" a calf with no mother. The term is derived from the Spanish word "dogal," meaning a short rope used to keep a calf away from its mother during milking.

Leppy An orphaned calf. Usually easily recognized by their pot bellies.

Oreana Another term used for a lone unmarked and unbranded calf

Slick A horse or cow with no brand, earmark or other identification of ownership.

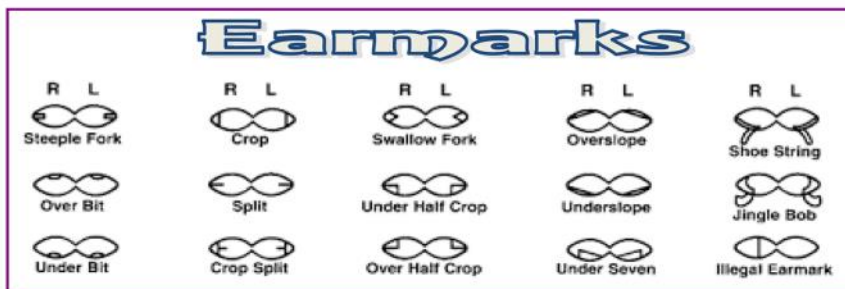
Brand A distinctive design burned into the hide of the cattle to identify ownership or origin. Brands are registered!

Bob Method of marking cattle by trimming their tail hair. This mark is made by cutting straight across the end tassel of tail hair, and is very distinctive and able to be seen from a long distance.

Long-tailed Cattle that have not been bobbed.

Earmarked Method of marking cattle by cropping their ears in distinctive patterns. Earmarks are registered, and can often be seen more easily than a brand.

Ear Tagged Method of marking cattle by attaching a tag to their ears. Often used to show vaccinations, breeding and herd identification.



Long-eared; full-eared Cattle that have not been earmarked and have their whole ears. Usually used to identify cattle which are of an age that it should have been branded and earmarked.

Dewlap or Waddle A mark formed by cutting a piece of skin so that it will grow into a distinctive hanging mark in a certain location. Used in conjunction with brands and earmarks.

De-horned Horns have been removed, usually when they are calves.

Check back next month for facial, leg & body marking descriptions!



COW Face Markings



Star

What?

You want me to cut which cow??

Star: mark on forehead

Mott: Cap or large mark across forehead

Bald Face: white face, may have black around eyes.

Blaze: thick mark down the face

Strip: thin mark down the face

Snip: mark across or around nostrils

Eye Ring or Eye Patch: circle of color around one or both eyes

Swirl or Cowlick: a section of the hair that lays in a circular pattern



Mott



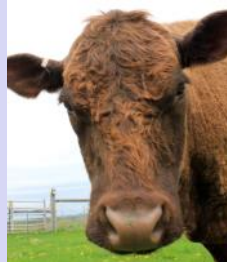
Bald Face



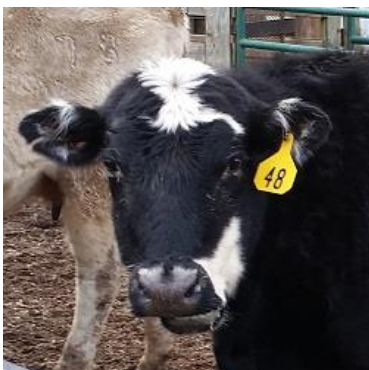
Blaze



Swirl or Cowlick



Eye Ring or Eyepatch



Mott and Snip



Strip and Snip



Strip

hardrockhotels.com/atlantic-city



treashorsetrailer@gmail.com
www.treashorsetrailer.com
Treas Horse Trailer Sales, LLC.
45 Hook Lane Lewisburg, PA 17837
570-768-4595



We are a family owned & operated business. You can find us outside of Lewisburg, Pennsylvania. Our specialty & passion is living quarters horse trailers. We have a variety of NEW Bison & SMC Living Quarters Trailers in stock. We also stock a selection of NEW Bumper Pulls from Frontier & Homesteader Trailers as well as a selection of used trailers on our lot. We work hard at keeping our website up to date for our customers. On it you can watch a video tour of each Living Quarter Trailer on our lot. We can service any make, model of trailer along with offering PA State Inspections. Come see why our customers love us and be apart of the family. We can't wait to put you and your horse in the trailer of your dreams! www.treashorsetrailer.com



QUAKERTOWN, PA 215-536-4443 MILLPONDVETCLINIC.COM



PCHA Pennsylvania Cutting Horse Association

Visit us on the web at www.pchacutting.com



PCHA: Pennsylvania Cutting Horse Association
2245 Mill Pond Road
Quakertown, Pennsylvania 18951

PLACE
STAMP
HERE

START
8 AM

JUDGE
KEN MOCK

PCHA SPRING CUTTINGS

MAY 1 & 2, 2021
BLOOMSBURG, PA

SECRETARY:
KARLENE SCHLEGEL 610-703-1693
ABBY NIKOLEVSKI

CLASS ORDER	ADDED \$	ENTRY FEE	CATTLE CHG	OFFICE	VIDEO	CIRCUIT FEE	SENIOR TOUR
OPEN*	499	135	135	40	9	3	20
NON PRO*	499	135	135	40	9	3	20
\$5K NOVICE*	499	135	135	40	9	3	20
SAT: \$35K NON PRO SUN: \$15K AM	AWARD	65	65	40	9	3	20
\$5K NOV NON PRO*	499	135	135	40	9	3	20
\$25K NOVICE*	299	135	135	40	9	3	20
YOUTH	AWARD	25	-	-	9	3	-
\$50K AMATEUR	200	80	80	40	9	3	20
\$25K NOV NON PRO	200	80	80	40	9	3	20
SAT: \$15K AM SUN: \$35K NON PRO	AWARD	65	65	40	9	3	20
2K RIDER	AWARD	65	65	40	9	3	20
\$900 RIDER	AWARD	-	60	-	-	-	-
HERD WORK	AWARD	-	60	-	-	-	-

*FRESH CATTLE CLASSES

STALL INFORMATION:

- Stalls \$95: Reserve by 4/26
 - Jack Werner 267-246-6511 OR
 - Karlene 610-703-1693 / karmin426@aol.com
- No shows will be billed for the stall fee.
- \$50 RV Fee
- Coggins Required

DIRECTIONS:

From I-80 Exit 236. Go right on 487 Light Street. At light turn right on Sawmill Rd, turns into Horse Farm Rd Keystone Horse Center on left

FRIDAY

3PM WORK SESSIONS \$100
CALL AHEAD REQUIRED

6:00 PM

PCHA 2020 AWARD BANQUET

- at the showgrounds
- \$25 per person
- Everyone welcomed but reservation required
 - Jack Werner 267-246-6511
 - Karlene 610-703-1693



PCHA

Pennsylvania Cutting Horse Association

2021
Membership &
Nomination
Application

To help ensure we have accurate information, please complete the entire contact section.

Name:				Date:	
Address:					
Primary Phone:			Alt. Phone:		
Email:					

Membership Applications \$25 per adult

\$15 per youth*

NCHA # Adult 1		NCHA # Youth 1	
NCHA # Adult 2		NCHA # Youth 2	

All nominations include rider and all horses shown by PCHA member. Award recipients must participate in 40% of the PCHA approved classes. The rider and owner of any horse must be a PCHA member for points to count for year end awards. Only money won after paid nominations will count toward year-end awards.

NOTE: Youth are required to be PCHA members for points to count towards year-end awards, but the owners of horses they ride may be non-members.

Nominations \$75 per adult

\$25 per youth

Adult 1:		Youth 1:	
Adult 2:		Youth 2:	
Adult 3:		Youth 3:	

Newsletters: In an effort to reduce cost, newsletters will be electronically shared through email, Facebook, and our website. Click on the link at the bottom of the membership page of our newsletter to subscribe to our email list.

My signature below confirms all information, nominations for year-end awards, and my donation to the PCHA.

Signature: _____

Please send completed forms to Bill Stein:
495 Schell Rd, Turbotville, PA 17772
or hws711@gmail.com

Qty	MEMBERSHIP:	Amt
	Adult(s) @ \$25 each	\$
	Youth(s) @ \$15 each	\$
	NOMINATIONS	
	Adult(s) @ \$75 each:	\$
	Youth(s) @ \$25 each:	\$
	Donation to PCHA:	\$ Thank You!
	Total Enclosed:	\$

Office Use Only:

Payment received: ___ On Settlement ___ Cash ___ Check # ___
Received by: _____ Date: _____